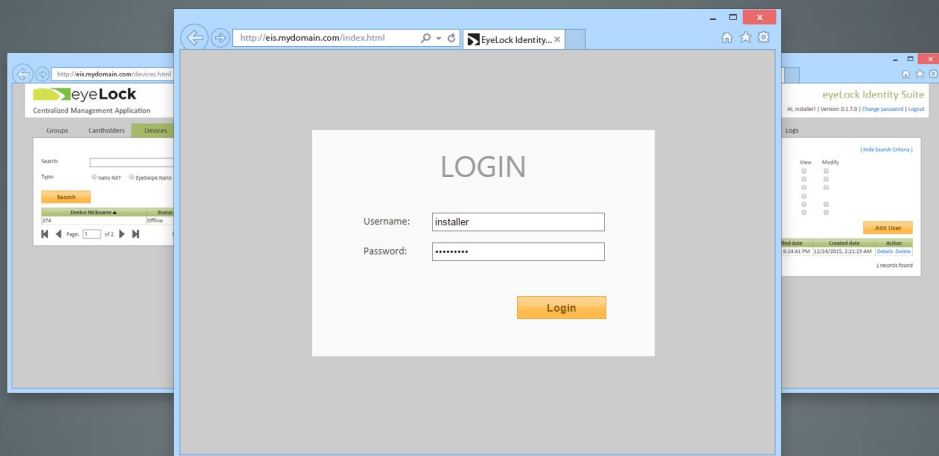


## IdentitySuite

Browser Based Management Application—  
Integration has never been so easy.

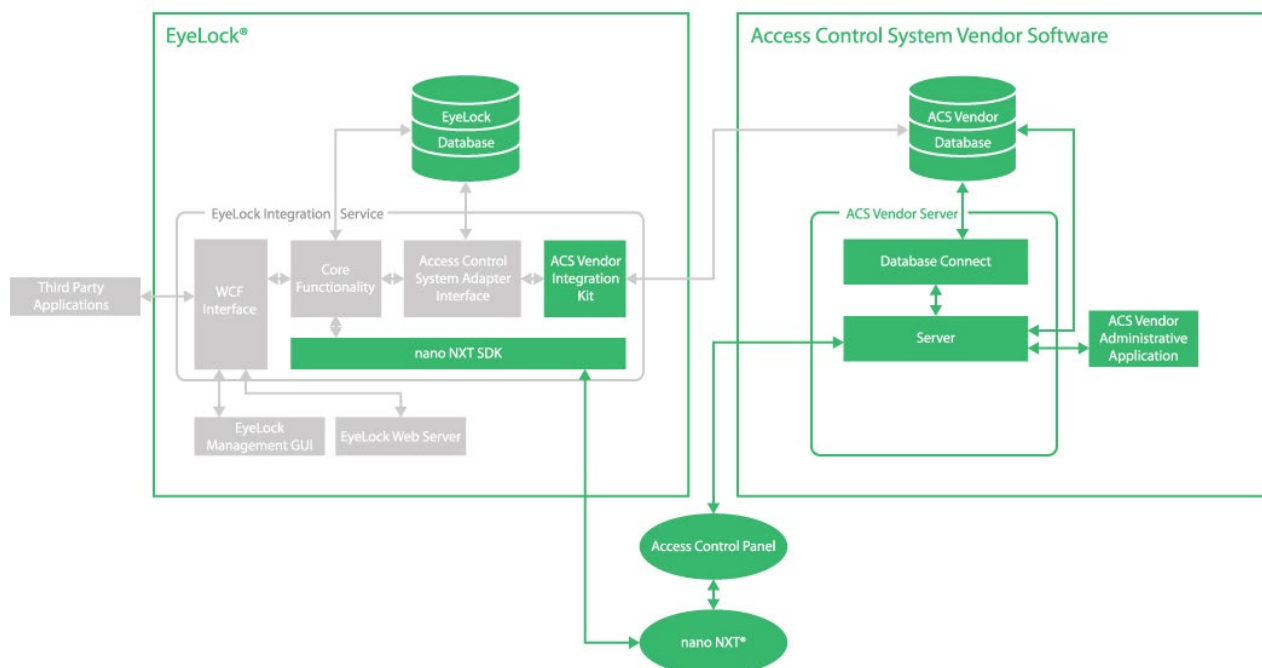


## HIGH SECURITY MADE SIMPLE.

The EyeLock Identity Suite Centralized Management Application (CMA) streamlines administration of EyeLock devices and users. The browser-based CMA simplifies firmware updates, provides the ability to simultaneously manage multiple device settings and remote device diagnostics for online and offline devices. The CMA turns any networked PC with access to the Identity Suite server into an enrollment station— a convenient solution for enterprise organizations with multiple geographic locations. When configured, the included Active Directory integration allows users to take advantage of Single Sign-On (SSO) using their existing Active Directory domain components.

In order to maximize efficiency of existing access control systems, the optional Core Integration component of the EyeLock Identity Suite can be implemented to enable a quick, error-free enrollment process. During iris enrollment, cardholder data is pulled directly from the access control database, eliminating time and the opportunity for data entry errors. Once enrolled, data is kept in sync, simplifying the administrative process. The Identity Suite also enables intelligent onboard memory management within the iris readers. Utilizing an individual's access control permissions, the system is able to determine and distribute iris templates only to doors which are necessary, maximizing the industry-leading onboard storage of 20,000 iris templates.

## IDENTITY SUITE ARCHITECTURE





Our vision for your secure world.

## IdentitySuite

Browser Based Management Application –  
Integration has never been so easy.







### FEATURES

- Centralized management of all EyeLock devices
- Browser based enterprise software
- Network matching for millions of users
- Multiple enrollment locations
- Core Integration Platform allows for simple integration development with access control platforms
- Template synchronization
- Cardholder data synchronization
- Secure Template Import/Export

### SPECIFICATIONS

SERVER	OS	SOFTWARE
Web Server	<b>One of the following:</b> Windows Server 2008 R2 SP1 x64 Windows Server 2012 x64 Windows Server 2012 R2 x64 Windows Server 2016 x64	IIS 6.x-7.0 .NET Framework 4.6 CMA Web Application
Application Server	<b>One of the following:</b> Windows Server 2008 R2 SP1 x64 Windows Server 2012 x64 Windows Server 2012 R2 x64 Windows Server 2016 x64	.NET Framework 4.6 CMA Platform Services
Database Server	<b>One of the following:</b> Windows Server 2008 R2 SP1 x64 Windows Server 2012 x64 Windows Server 2012 R2 x64 Windows Server 2016 x64	One of the following: Microsoft SQL Server 2008 R2 Microsoft SQL Server 2012 R2 Microsoft SQL Server 2014 Microsoft SQL Server 2016

### ACCESS CONTROL INTEGRATION

ACCESS CONTROL SYSTEM	VERSIONS	EMBEDDED ENROLLMENT*
	7.0 7.1 7.2 7.3 7.4 (pending)	
	2.4 2.5 2.6 2.7	X X X X
	5.5 5.6 5.7	X X X
	4.2 4.3	X
	3.5.1	
	2.8 2.9	